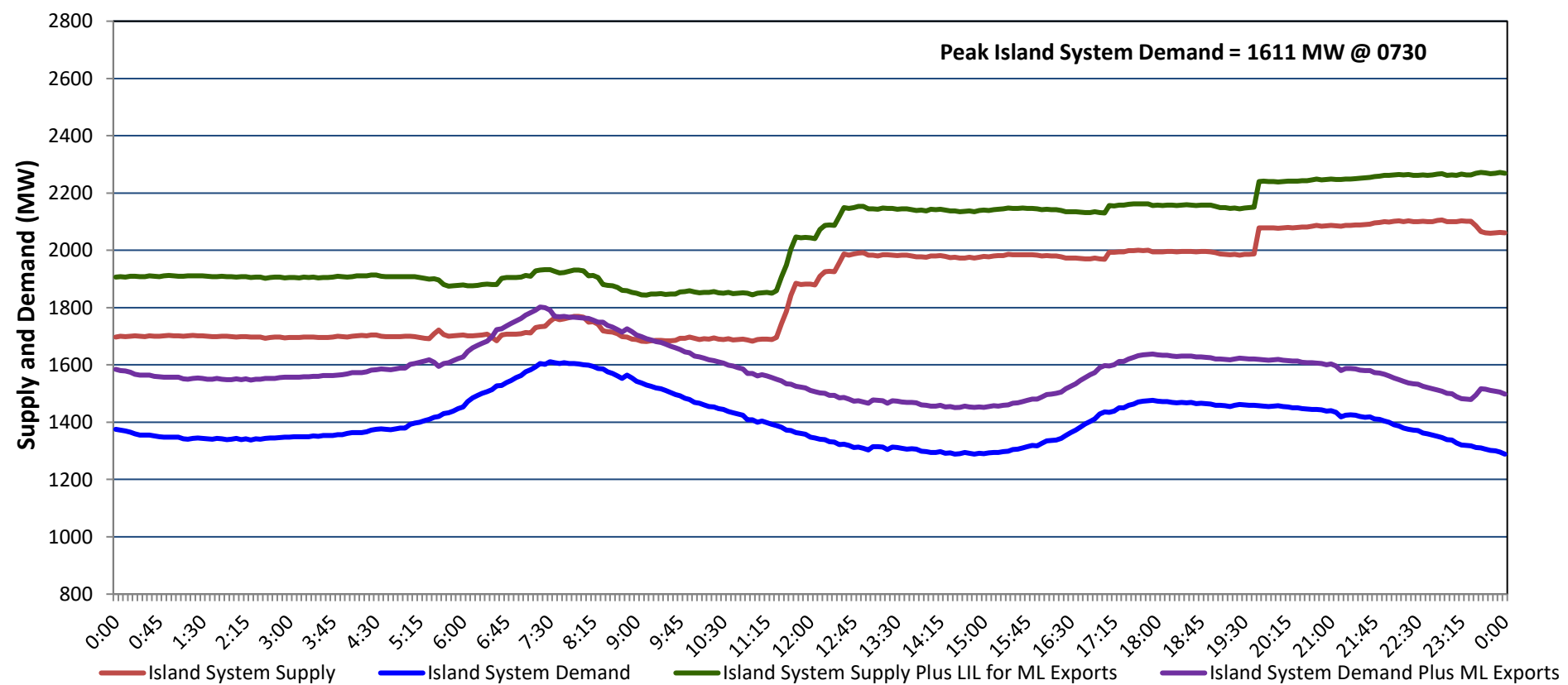


Newfoundland Labrador Hydro (NLH) Supply and Demand Status Report Filed Friday, February 14, 2025

Section 1 Island Interconnected System - Supply, Demand & Exports Actual 24 Hour System Performance For Thursday, February 13, 2025



Island Supply Notes For February 13, 2025

- A As of 1059 hours, February 12, 2025, Holyrood Unit 2 available at 130 MW due to forced derating (170 MW).
- B As of 1116 hours, February 12, 2025, Holyrood Unit 3 available at 135 MW due to forced derating (150 MW).
- C As of 1449 hours, February 12, 2025, Holyrood Gas Turbine unavailable due to forced outage (123.5 MW).
- D At 0953 hours, February 13, 2025, Labrador Island Link available at full capacity (700 MW) - Bipole.
- E At 1508 hours, February 13, 2025, Hawkes Bay Diesel Plant available at full capacity (5 MW).
- F At 1943 hours, February 13, 2025, Holyrood Unit 1 available at 90 MW due to forced derating (170 MW).

Section 2 Island Interconnected System - Supply, Demand & Outlook

Fri, Feb 14, 2025	Island System Outlook ²	Seven-Day Forecast	Island System Daily Peak Demand (MW)	
			Forecast ⁸	Adjusted ⁶
Island System Supply: ⁴	2,138 MW	Friday, February 14, 2025	1,530	1,422
NLH Island Generation: ^{3,7}	1,435 MW	Saturday, February 15, 2025	1,510	1,403
NLH Island Power Purchases: ⁵	140 MW	Sunday, February 16, 2025	1,420	1,314
NP and CBPP Owned Generation:	205 MW	Monday, February 17, 2025	1,415	1,309
LIL/ML Net Imports to Island: ⁹	358 MW	Tuesday, February 18, 2025	1,395	1,289
		Wednesday, February 19, 2025	1,385	1,279
7-Day Island Peak Demand Forecast:	1,530 MW	Thursday, February 20, 2025	1,450	1,343

Island Supply Notes For February 14, 2025

- Notes:
1. Generation outages for running and corrective maintenance are included. These are not unusual for power system operations. They generally do not impact customer supply. Hydro schedules outages to system equipment whenever possible to coincide with periods when customer demands are low and sufficient supply reserves are available. However, from time to time equipment outages are necessary and reserves may be impacted.
 2. As of 0800 Hours.
 3. Gross continuous unit output.
 4. Gross output from all Island sources (including Note 3).
 5. NLH Island Power Purchases include: ML Imports, Exploits Generation, Rattle Brook, Star Lake, Wind Generation and capacity assistance (when applicable).
 6. Adjusted for interruptible load and the impact of voltage reduction when applicable.
 7. Due to limitations inherent in the design of combustion turbines, the output of combustion turbines may be reduced in the event that ambient temperatures exceed the threshold required for full rated output. This threshold is dependent on the design of each turbine.
 8. Does not include ML Exports.
 9. LIL Import sunk in the Island System. Actual LIL flows will be restricted by various system conditions including, but not limited to, Island Load, ML Exports and Avalon Unit status.

Section 3 Island Peak Demand and Exports Information Previous Day Actual Peak and Current Day Forecast Peak

Thu, Feb 13, 2025	Island Peak Demand ¹⁰	7:30	1,611 MW
	Exports at Peak		180 MW
	LIL Net Imports to Island		4,490 MWh
Fri, Feb 14, 2025	Forecast Island Peak Demand		1,530 MW

- Notes: 10. Island Demand is supplied by NLH generation and purchases, LIL Imports plus generation owned and operated by Newfoundland Power and Corner Brook Pulp & Paper (Deer Lake Power, DLP).